

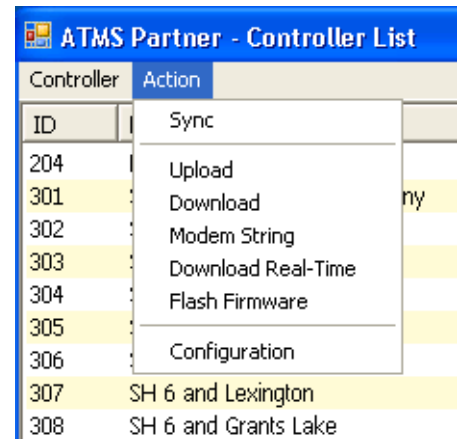
Field Partner Module

Trafficware's ATMS.now has a fully integrated Field Partner application, providing access to traffic controller units that are otherwise disconnected from the central system.

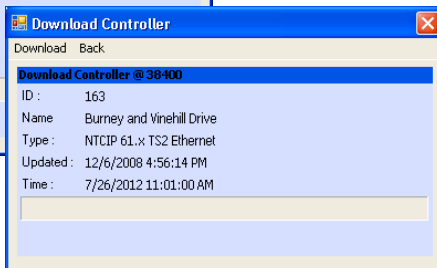
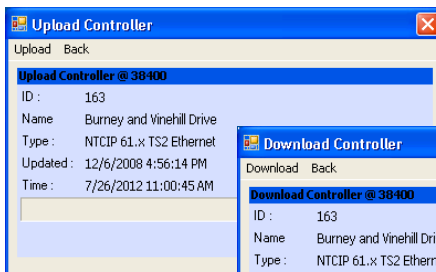
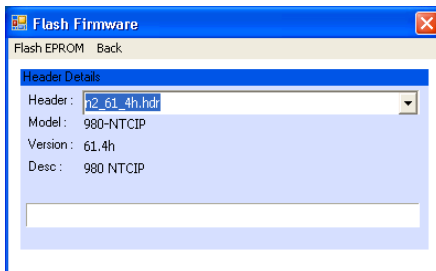
Capabilities

The major functions of the application include:

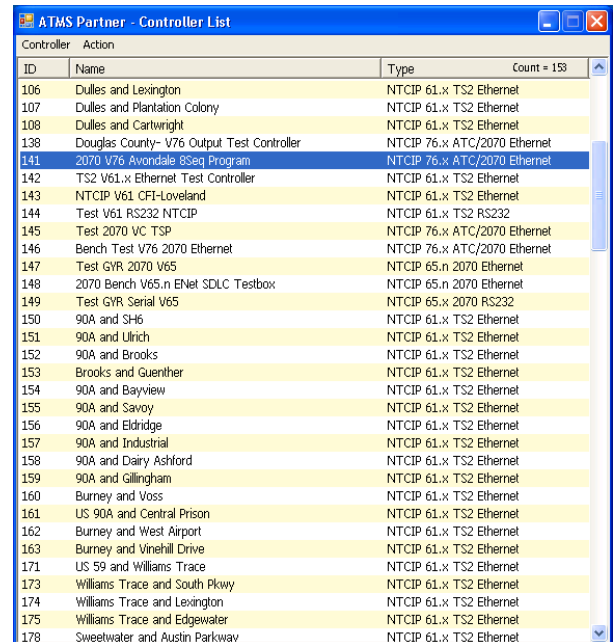
- One-click installation
- Accessibility to ATMS.now
- List of all available controllers
- Upload database from a controller
- Download database to a controller
- Retrieves most recent controller databases from the central system
- Transfers recent controller databases from the central system
- Downloads current time-of-day to a controller
- Flash controller firmware
- Single action menu that provides access to all application functions



Below: Flash Firmware



Right: When the app first starts, it will display the list of controllers in the system. This list will be populated from the application server after syncing from the server.



Left: The user may select a controller from the list and then click either the Upload or Download button to transfer data between the device and the controller.