

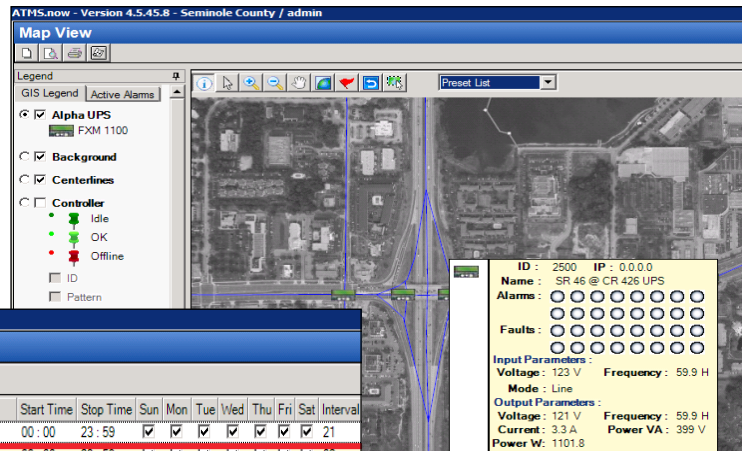
ATMS.now - Alpha UPS Module

ATMS.now provides integrated access to the Alpha UPS, providing important data and configuration directly from your ATMS.now command center. Alpha provides rugged UPS power systems used in the most demanding traffic environments.

Capabilities

The Alpha integration with ATMS.now is quite extensive and includes:

- GIS Integration
- Custom Tooltip
- Device Notification for faults and alarms
- System full status schedule
- Report



Map View with Tool Tip

Alpha Status

ATMS.now - Version 4.5.45.8 - Seminole County / admin

Schedule List View

Description	Report	By	Selected	Start date	Stop Date	Start Time	Stop Time	Sun	Mon	Tue	Wed	Thu	Fri	Sat	Interval
Alarm Poll	Alarm Polling	Flex Group	Active Comm Locations	05/26/2014	01/01/2050	00:00	23:59	✓	✓	✓	✓	✓	✓	✓	21
Alpha Status 025	Alpha Status	Device Flex Group	Alpha UPS 025	12/15/2013	01/01/2050	00:00	23:59	✓	✓	✓	✓	✓	✓	✓	02
Alpha Status 050	Alpha Status	Device Flex Group	Alpha UPS 050	12/15/2013	01/01/2050	00:00	23:59	✓	✓	✓	✓	✓	✓	✓	02
Alpha Status 075	Alpha Status	Device Flex Group	Alpha UPS 075	12/15/2013	01/01/2050	00:00	23:59	✓	✓	✓	✓	✓	✓	✓	02
Alpha Status 100	Alpha Status	Device Flex Group	Alpha UPS 100	12/15/2013	01/01/2050	00:00	23:59	✓	✓	✓	✓	✓	✓	✓	02
ATMS Time Sync	Download Real-Time	Flex Group	Full Status (Continuous)	12/15/2013	01/01/2050	00:00	23:59	✓	✓	✓	✓	✓	✓	✓	19
ATMS Time Sync FS 25 Trigger	Download Real-Time	Flex Group	FS 25 alarm trigger	12/15/2013	01/01/2050	00:00	23:59	✓	✓	✓	✓	✓	✓	✓	
ATMS Time Sync Radio	Download Real-Time	Flex Group	Radio (RS-232)	12/15/2013	01/01/2050	00:00	23:59	✓	✓	✓	✓	✓	✓	✓	
ATMS Time Sync Wireless	Download Real-Time	Flex Group	Wireless (ITS1000 - Minute)	12/15/2013	01/01/2050	00:00	23:59	✓	✓	✓	✓	✓	✓	✓	
Database Verify PRM	Verify Database-Permanent	Flex Group	Active Comm Locations	12/15/2013	01/01/2050	01:13	01:19	✓	✓	✓	✓	✓	✓	✓	
Database Verify SP1	Verify Database-Special 1	Flex Group	Active Comm Locations	12/15/2013	01/01/2050	01:23	01:29	✓	✓	✓	✓	✓	✓	✓	
Database Verify STD	Verify Database-Standard	Flex Group	Active Comm Locations	12/15/2013	01/01/2050	01:03	01:09	✓	✓	✓	✓	✓	✓	✓	
Full Status	Full Status	Flex Group	Full Status (Continuous)	12/15/2013	01/01/2050	00:00	23:59	✓	✓	✓	✓	✓	✓	✓	

Alpha Report

ATMS.now - Version 4.5.45.8 - Seminole County / admin

Alpha UPS Alarm/Fault Report

Alpha UPS Report 6/5/2014

Date/Time	Mode	Alarms	Faults
Airport Blvd @ Old Lk Mary UPS			
IP Address: 10.55.97.6			
4/7/2014 6:02:49PM	Inverter	User Input Alarm	
4/7/2014 6:04:07PM	Line		
CR 427 @ Gen Hutch UPS			
IP Address: 10.55.197.42			
3/14/2014 1:32:34PM	Inverter	Battery Test	
3/14/2014 2:56:58PM	Line	User Input Alarm	

Device Event Notification Details

Device Type: Alpha UPS - FXM 1100

By: Device Flex Group

Select: Alpha UPS 025

User Distribution: ccdickson User

Alarms and Faults Selection

Alarms/Faults	Value
Alarms	
A1 - Overload	No
A2 - Fan Sp...	No
A3 - Battery ...	Yes
A4 - Battery ...	Yes
A5 - Battery t...	No
A6 - Battery ...	Yes
A7 - Temp P...	No
A8 - Freq In...	No
A9 - User In...	No
A10 - Battery...	Yes
A11 - Battery...	Yes
A12 - A11	No
A13 - A12	Yes
A14 - A13	No
A15 - A14	No
A16 - A15	No
Faults	
F1 - Overload	No

Event Notification